



Participants' Biographies

July 9-10, 2025



Table of Contents



1. LPAC Guests

1.1. Kenneth Marangu, Senior Corporate Analyst at AfDB.....	2
1.2. Christine Ndiwa, Senior Investment Officer at IFC.....	2
1.3. Quinton Soper, Investment Manager at BII.....	3
1.4. Moyo Eigbefoh, Investment Associate at BII.....	3
1.5. Annette Ewald, Senior Investment Manager at DEG.....	4
1.6. Kostadin Stoychevski, Analyst at DEG.....	4
1.7. Fredrik Linton, Director Investment Ops & ESG at Swedfund	5
1.8. Valary Omamo, Associate Senior Investment Manager at Swedfund...	5
1.9. Francis Owusu, Representative at PineBridge Investments...	6

2. Management Profiles

2.1. Papa Madiaw Ndiaye, CEO.....	7
2.2. Patrice Backer, CIO	7
2.3. Kelechi Okoro, Director.....	8
2.4. Marguerite Tall, Investment Manager.....	8
2.5. Jessica Ali Yerima, Finance & Accounting Manager.....	9
2.6. Kadiatou Traoré, Investor Relations Officer.....	9

3. Operations Team

3.1. Aïssatou Dia, HR & OPS Manager	10
3.2. Berenger Diantouadi, Senior Investment Assistant.....	10

4. Portfolio Company Hosts

4.1. Afriyie Oware, CEO, AXIS.....	11
4.2. Odun Odunfa , CEO, FABL.....	11

1.1. Kenneth Marangu,

Senior Corporate Portfolio Analyst

African Development Bank (AfDB) 

1.1.1. Bio and Role in the Company

Kenneth Marangu is a key figure at the African Development Bank (AfDB), where he is associated with the Facility for Energy Inclusion (FEI). The FEI is a significant initiative that aims to increase access to debt financing for small scale renewable energy projects in Africa. This initiative is instrumental in enhancing the energy sector across the continent. Kenneth's role involves strategic planning and implementation of the FEI's objectives.

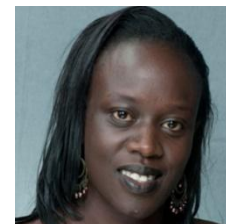
1.2. Christine Ndiwa,

Senior Investment Officer

International Finance Corporation (IFC) 

1.2.1. Bio and Role in the Company

Christine is a Senior Investment Officer at the International Finance Corporation (IFC), the largest global development institution focused exclusively on the private sector in developing countries. Her role involves strategizing and implementing investment plans that align with the IFC's mission of fostering private sector growth in developing economies.



1.2.2. Previous Experience

Prior to joining IFC, Christine worked as an Associate Director at Acumen Fund, a social venture capital fund operating in New York, East Africa (including Ethiopia), India, Pakistan, West Africa and Latin America. Prior to joining Acumen, Christine worked with the corporate finance department of the investment arm of the Aga Khan Fund for Economic Development.



1.3. Quinton Soper,

Investment Manager

British International Investment 



1.3.1. Bio and Role in the Company

Quinton Soper is a professional at British Investment International (BII) he joined the institution in 2021 and deals with Private Equity in Emerging Markets. BII is the UK's development finance institution that supports companies in developing countries. Quinton's role at BII involves strategizing and implementing plans that align with the organization's mission of fostering growth in developing economies.

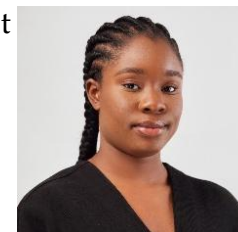
1.3.2. Previous Experience

Prior to joining BII, Quinton worked as a Senior Investment Officer at PROPARCO from 2015 in Johannesburg, before moving to Paris in 2019 to focus on Private Equity in Africa and the Middle East.

1.4. Moyo Eigbefoh,

Investment Associate

British International Investment 



1.4.1. Bio and Role in the Company

Moyo is currently an Investment Associate at BII.

1.4.2. Previous Experience

Experienced professional at PwC Nigeria, she progressed from Financial Services Assurance to Deals Advisory consulting. Her career began with strategic internships at KPMG Nigeria in audit and at ARM HoldCo with two successive assignments in AYTP and Risk Management.

Associate Accounting Technician certified by the Institute of Chartered Accountants of Nigeria, she also holds CFA, and an IT Project Manager certificate.



1.5. Annette Ewald,

Senior Investment Manager

*Deutsche Investitions- und
Entwicklungsgesellschaft*



1.5.1. Bio and Role in the Company

Annette Ewald is associated with DEG. She has a Ph.D. in Geography from the University of Minnesota, Minneapolis, and an M.A. in Geography from Carleton University in Canada.

1.5.2. Previous Experience

Prior to joining DEG, Annette served as CEO of Club des Amis d'Allemagne in Douala, Cameroon, fostering German-Cameroonian business relations through the German Cooperation's integrated experts program. Previously, she was Senior Consultant in Transaction Advisory Services at Ernst & Young Stuttgart, conducting financial due diligences, audits, and participating in launching Corporate Social Responsibility Services.

1.6. Kostadin Stoychevski,

Analyst

*Deutsche Investitions- und
Entwicklungsgesellschaft(DEG)*



1.6.1. Bio and Role in the Company

Kostadin has a meaningful experience in the banking sector. He is currently working as Senior Africa Equity Analyst at DEG.

1.6.2. Previous Experience

Prior to DEG, Kostadin was working as a Loan Officer in Corporate Banking Division. From 2011 until 2015 he worked as Underwriter in Credit Insurance Department by Macedonian Bank for Development Promotion.



1.7. Fredrik Linton,

Director Investment Operations & ESG
Swedfund Swedfund



1.7.1. Bio and Role in the Company

Fredrik Linton is the Chief Business Development and Special Operations Officer at Swedfund International AB. His role involves strategizing and implementing business development plans that align with Swedfund's mission of fostering sustainable and responsible investments in developing countries.

1.7.2. Previous Experience

Prior to Swedfund International, Fredrik Linton worked at the Swedish media group Bonnier for 2 years.

1.8. Valary Omamo,

Associate Senior Investment Manager
Swedfund Swedfund

1.8.1. Bio and Role in the Company

Valary Omamo is currently an Associate Senior Investment Manager at Swedfund.



1.8.2. Previous Experience

Prior to joining Swedfund, Valary worked as Senior Investment Consultant at Agri Frontier, an agri-business advisory firm specializing in creating world-class farming enterprises across East Africa. Previously, she spent over six years at KPMG East Africa, progressing from Management Consultant to Senior Associate in Deal and Strategy Advisory, where she supported mergers and acquisitions, conducted due diligence, valuations, and financial modeling across diverse sectors. She also gained research experience as Market Intelligence Associate and Research Analyst at StratLink Africa.



1.9. Francis Owusu,

Representative PineBridge Investments

PineBridge Investments 



1.9.1. Bio and Role in the Company

Francis Owusu represents PineBridge on the AFIG Fund II LPAC

1.9.2. Previous Experience

Prior to joining the firm, Francis Owusu was Senior Vice President/Senior Research Analyst at PineBridge Investments in New York, where he specialized in due diligence, manager selection, and portfolio management of Private Credit Funds, Sub-Sahara African Private Equities, and Hedge Funds. He was with PineBridge Investments for over 15 years.



Management Profiles

2.1. Papa Madiaw Ndiaye,

CEO

AFIG Funds



2.1.1. Bio and Role in the Company

Papa Madiaw Ndiaye is the CEO and Founding Partner. He leads the strategic direction of the Funds and manages relationships with the investors. He is also responsible for managing all aspects of the investment process.

Papa has been appointed as chairman of ETI Group.

2.1.2. Previous Experience

Prior to AFIG Funds, Papa was an Investment Director at Emerging Markets Partnership in Washington (EMP, now ECP). Prior to joining EMP, he held senior responsibilities for IFC's equity and debt investment activities in capital markets and financial institutions in Africa between 1996 and 2000. Papa spent the early part of his career at Salomon Brothers and joined JP Morgan's Emerging Markets Group in 1992. In 2000, Papa was named Special Advisor for Economic and Financial Affairs to the President of the Republic of Senegal and Chairman of the Senegalese Presidential Economic & Financial Advisory Council. He serves on the boards of several African companies and non-profit organizations pertaining to Africa.

2.2. Patrice Backer,

CIO

AFIG Funds



2.2.1. Bio and Role in the Company

Patrice Backer is the Chief Investment Officer and Co-Founder. He leads all aspects of the investment process and is a member of the Funds' Investment Committee.

2.2.2. Previous Experience

Prior to AFIG Funds, Patrice was the Managing Director of PromoCapital, a transnational investment firm with offices in Haiti and the U.S., where he led investment banking in several areas. He formerly served as Vice President of JPMorgan's Emerging Markets Sales and Trading and Latin America Mergers & Acquisitions groups.



Management Profiles

2.3. Kelechi Okoro,

Director

AFIG Funds



2.3.1. Bio and Role in the Company

Kelechi Okoro is a Partner and Director and works in the company since 2013. Kelechi's responsibilities range from deal origination and appraisal to due diligence and monitoring. His portfolio monitoring responsibilities include Nigerian German Chemicals, a pharmaceutical company in Nigeria, FSDH, a Nigerian leading bank, Tecnicil, a Cape Verdean leading drink producer and FABL, a leading bank in Ghana. He is a citizen of Nigeria.

2.3.2. Previous Experience

Prior to AFIG Funds, Kelechi was at Argentil Capital Partners where he originated and executed infrastructure transactions. Prior to Argentil, he worked with the Infrastructure and Natural Resources Group of the International Finance Corporation (IFC), and at ARM Investment Managers (with ~USD 2b AUM), both in Nigeria.

2.4. Marguerite Tall,

Investment Manager

AFIG Funds



2.4.1. Bio and Role in the Company

Marguerite is an Investment Manager and works at AFIG Funds since 2024. She has spent over 9 years in the financing of SMEs across Francophone and Anglophone African countries with involvement ranging from identifying, investing in, and supporting the growth of SMEs, making a significant contribution to their development.

2.4.2. Previous Experience

Prior to AFIG Funds, Marguerite was the Country Manager of Investisseurs & Partenaires in Senegal (EUR 160m+ in AUM) where she was directly responsible for overseeing the fund's investment strategy, executing deals, managing exits as well as and coordinating relationships with key stakeholders in 5 countries. Marguerite also worked on deal origination and value creation efforts of companies in agribusiness during her time at Injaro Investments and in the healthcare, infrastructure and primary agriculture fields at the Senegalese Sovereign Wealth Fund.

Marguerite holds a MA in International Economics & Finance from The Johns Hopkins University, SAIS.



Management Profiles

2.5. Kadiatou Traore,

Investor Relations Officer

AFIG Funds



2.5.1. Bio and Role in the Company

Kadiatou currently leads investor relations, fundraising, and corporate communications at AFIG Funds. Her experience spans brokerage, corporate finance, and a range of roles in asset management, where she has developed a strong track record in building client relationships and driving growth across diverse markets.

2.5.2. Previous Experience

Prior to join AFIG, Kadiatou led retail and distribution activities across Gulf countries for Natixis Asset Management, based in Dubai, where she oversaw the development of distribution strategies and partnerships with local banks, international banks, family offices, and insurance companies. Prior to this role, she managed retail operations for a brokerage firm covering the GCC markets, with a strong focus on serving the expatriate community. In this capacity, she built close relationships with major insurance providers, including Zurich and Generali, to deliver tailored investment solutions and drive business growth.

2.6. Jessica Ali Yerima,

Accounting & Finance Manager

AFIG Funds



2.6.1. Bio and Role in the Company

Jessica is a seasoned Accounting Consultant and Auditor, recognized for her strong expertise in managing customer portfolios, overseeing accounts, optimizing receivables, and driving HR and financial reporting processes. A certified Chartered Accountant (CPA).

2.6.2. Previous Experience

Prior to her role as Manager at Deloitte, Jessica worked as a Senior Accounting Consultant at Mazars and was mobile between the Abidjan and Dakar Offices.



Operations Team

3.1. Aïssatou Dia,

HR & Operations Manager

AFIG Funds



3.1.1. Bio and Role in the Company

Aïssatou is currently HR & Operations Manager at AFIG FUNDS in Dakar, where she oversees the full spectrum of human resource activities including recruitment, performance management, and employee relations while ensuring compliance with local labor laws. She also manages operations across procurement, transportation, travel, communications, and IT, implementing policies and procedures.

3.1.2. Previous Experience

Prior Prior to joining AFIG FUNDS, Aïssatou worked at APM Terminals where she progressed from Office Manager to Procurement Officer managing supplies and services for Senegal operations.

3.2. Berenger Diantouadi,

Senior Investment Assistant

AFIG Funds



3.2.1. Bio and Role in the Company

Béranger Diantouadi is a Senior Investment Assistant at AFIG Funds. He supports both the Chief Accountant and the Investment Team, while also assisting the HR & Operations Manager with administrative and operational tasks. He is a citizen of the Republic of Congo.

3.2.2. Previous Experience

Prior to AFIG Funds, Béranger worked as an Assistant in Accounting, Compliance & Reporting at Ernst & Young Congo, where he worked under the supervision of a chartered accountant.



Portfolio Company Hosts

4.1. Afriyie Oware,

CEO

Axis Pension



4.1.1. Bio and Role in the Company

Afriyie Oware is the current CEO at Axis Pension.

4.1.2. Previous Experience

Prior to joining Axis, Afriyie spent over six years at Databank Asset Management Services Ltd in Accra, Ghana, progressing from Fund Administrator & Investment Analyst to Fund Manager.

4.2. Odun Odunfa,

CEO

First Atlantic Bank(FABL)



4.2.1. Bio and Role in the Company

Odun Odunfa is the current CEO at First Atlantic Bank.

4.2.2. Previous Experience

He has over 3 decades of banking experience spanning Treasury, Corporate, Investment and Retail Banking. Prior to his appointment, he was the CEO/Managing Director at Kedari Capital Ltd and served in various non-executive capacities on the FABL Board of Directors.





AFIG
FUNDS